




STATE OF NORTH CAROLINA
DEPARTMENT OF TRANSPORTATION

ROY COOPER
GOVERNOR

J. ERIC BOYETTE
SECRETARY

March 16, 2022

ADDENDUM # 1

To: Plan Holders
From: Josh Deyton, P.E. 
Project Team Lead

RE: **Pay Item Revision & Plan Revision**
Contract ID: DN00779
County: Cherokee, Clay, Graham, and Macon
Letting Date: March 22, 2022

The above contract has experienced the following revisions:

Pay Item Revision

On sheet T-1 of the proposal, the following pay item quantities have been revised:

0005	2549000000-E	846	2'-6" CONCRETE CURB & GUTTER

0006	2591000000-E	848	4" CONCRETE SIDEWALK

0007	2600000000-N	848	RETROFIT EXISTING CURB RAMPS

0008	2605000000-N	848	CONCRETE CURB RAMPS

On sheet T-1 of the proposal, the following pay item has been removed:

0010 2647000000-E 852 5" MONOLITHIC CONCRETE ISLANDS
(SURFACE MOUNTED)

See attached sheet T-1 showing these revisions.

Plan Sheet Revision

The following revisions have been made to the plan sheets:

- Site 6- Switched type 1 to type 1B
- Site 7B- Omitted proposed concrete island nose on all 4-legs of this intersection
- Site 12- Switched replace ramp to retrofit with a detectable pad
- Site 21- Switched type 2 to type 1A
- Site 22- Switch both type 2 to type 1A
- Site 26- Switched type 2 to type 1

See attached plan sheets showing these revisions.

Please access ebs addenda files on Bid Express®.

Thank you for your attention to this matter.

County : Cherokee, Macon, Graham, Clay

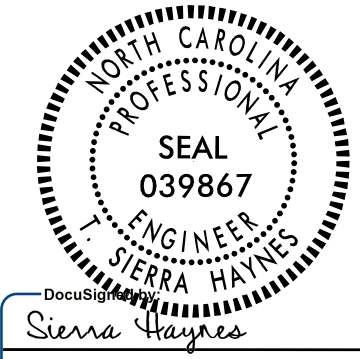
Line #	Item Number	Sec #	Description	Quantity	Unit Cost	Amount
ROADWAY ITEMS						
0001	0000100000-N	800	MOBILIZATION	Lump Sum	L.S.	
0002	0043000000-N	226	GRADING	Lump Sum	L.S.	
0003	1220000000-E	545	INCIDENTAL STONE BASE	25 TON		
0004	1693000000-E	654	ASPHALT PLANT MIX, PAVEMENT REPAIR	15 TON		
0005	2549000000-E	846	2'-6" CONCRETE CURB & GUTTER	495 LF		
0006	2591000000-E	848	4" CONCRETE SIDEWALK	275 SY		
0007	2600000000-N	848	RETROFIT EXISTING CURB RAMPS	7 EA		
0008	2605000000-N	848	CONCRETE CURB RAMPS	74 EA		
0009	2612000000-E	848	6" CONCRETE DRIVEWAY	25 SY		
0011	2845000000-N	858	ADJUSTMENT OF METER BOXES OR VALVE BOXES	6 EA		
0012	4155000000-N	907	DISPOSAL OF SIGN SYSTEM, U-CHANNEL	2 EA		
0013	4405000000-E	1110	WORK ZONE SIGNS (PORTABLE)	160 SF		
0014	4435000000-N	1135	CONES	130 EA		
0015	4447000000-E	SP	PEDESTRIAN CHANNELIZING DEVICES	50 LF		
0016	4455000000-N	1150	FLAGGER	202 DAY		
0017	4600000000-N	SP	GENERIC TRAFFIC CONTROL ITEM AUDIBLE WARNING DEVICE	2 EA		
0018	4600000000-N	SP	GENERIC TRAFFIC CONTROL ITEM PEDESTRIAN TRANSPORT SERVICE	10 EA		
0019	4600000000-N	SP	GENERIC TRAFFIC CONTROL ITEM TEMPORARY CURB RAMP	2 EA		
0020	4695000000-E	1205	THERMOPLASTIC PAVEMENT MARKING LINES (8", 90 MILS)	1,040 LF		

PLAN SHEETS FOR CHEROKEE COUNTY

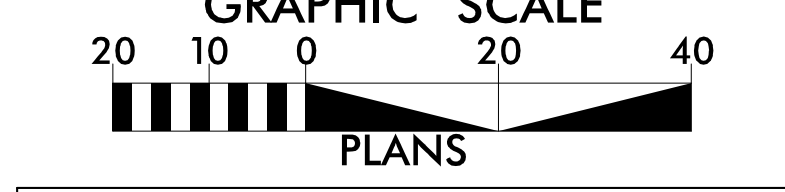
wsp 1001 MOREHEAD SQUARE DRIVE
SUITE 610
CHARLOTTE, NC 28203
NC LIC. NO. F-0165

PROJECT REFERENCE NO. R-5794G	SHEET NO. 5
RW SHEET NO.	

ROADWAY DESIGN ENGINEER



3/16/2022

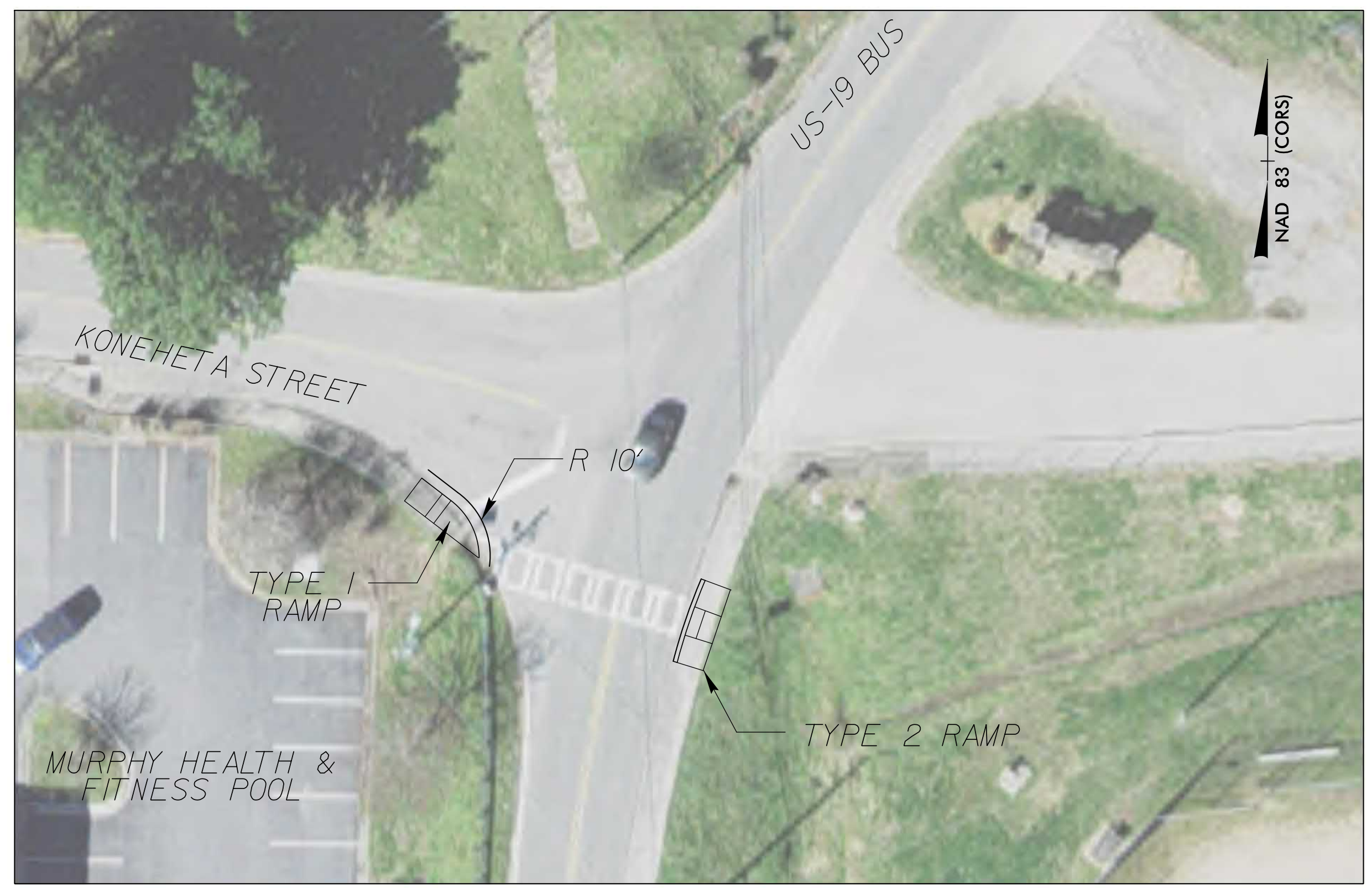


DOCUMENT NOT CONSIDERED FINAL UNLESS ALL SIGNATURES COMPLETED

SITE 4 - LOCUST STREET AND THIRD STREET



SITE 5 - US-19 BUS AND KONEHETA STREET/CONNAHETTA STREET



SITE 6 - HWASSEE STREET (VALLEY RIVER AVE.) AND LAKESIDE DRIVE



SITE 7 - SYCAMORE STREET AND HWASSEE STREET (VALLEY RIVER AVE.)



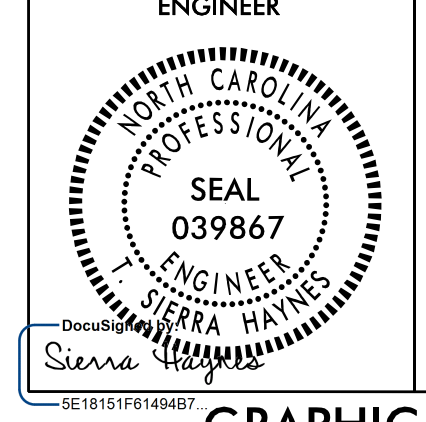
SEE SHEETS 2C-1 & 2C-2 FOR CURB RAMP DETAILS

PLAN SHEETS FOR CHEROKEE COUNTY

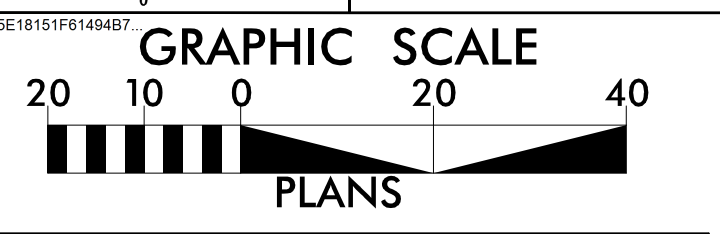
wsp 1001 MOREHEAD SQUARE DRIVE
SUITE 610
CHARLOTTE, NC 28203
NC LIC. NO. F-0165

PROJECT REFERENCE NO. R-5794G	SHEET NO. 5B
RW SHEET NO.	

SITE 7B - HWASSEE STREET AND TENNESSEE STREET



3/16/2022



**DOCUMENT NOT CONSIDERED FINAL
UNLESS ALL SIGNATURES COMPLETED**

**REMOVE CONCRETE ISLAND WITHIN CROSSWALKS AND
REPAINT CROSSWALKS AS NEEDED FOR NCDOT STD.1205.07*

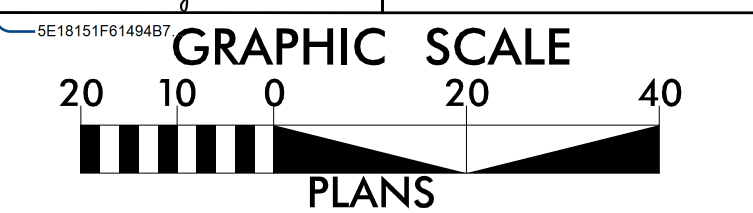
8/17/99

PLAN SHEETS FOR GRAHAM COUNTY

wsp 1001 MOREHEAD SQUARE DRIVE
SUITE 610
CHARLOTTE, NC 28203
NC LIC. NO. F-0165

PROJECT REFERENCE NO. R-5794G	SHEET NO. 7
RW SHEET NO.	
ROADWAY DESIGN ENGINEER	

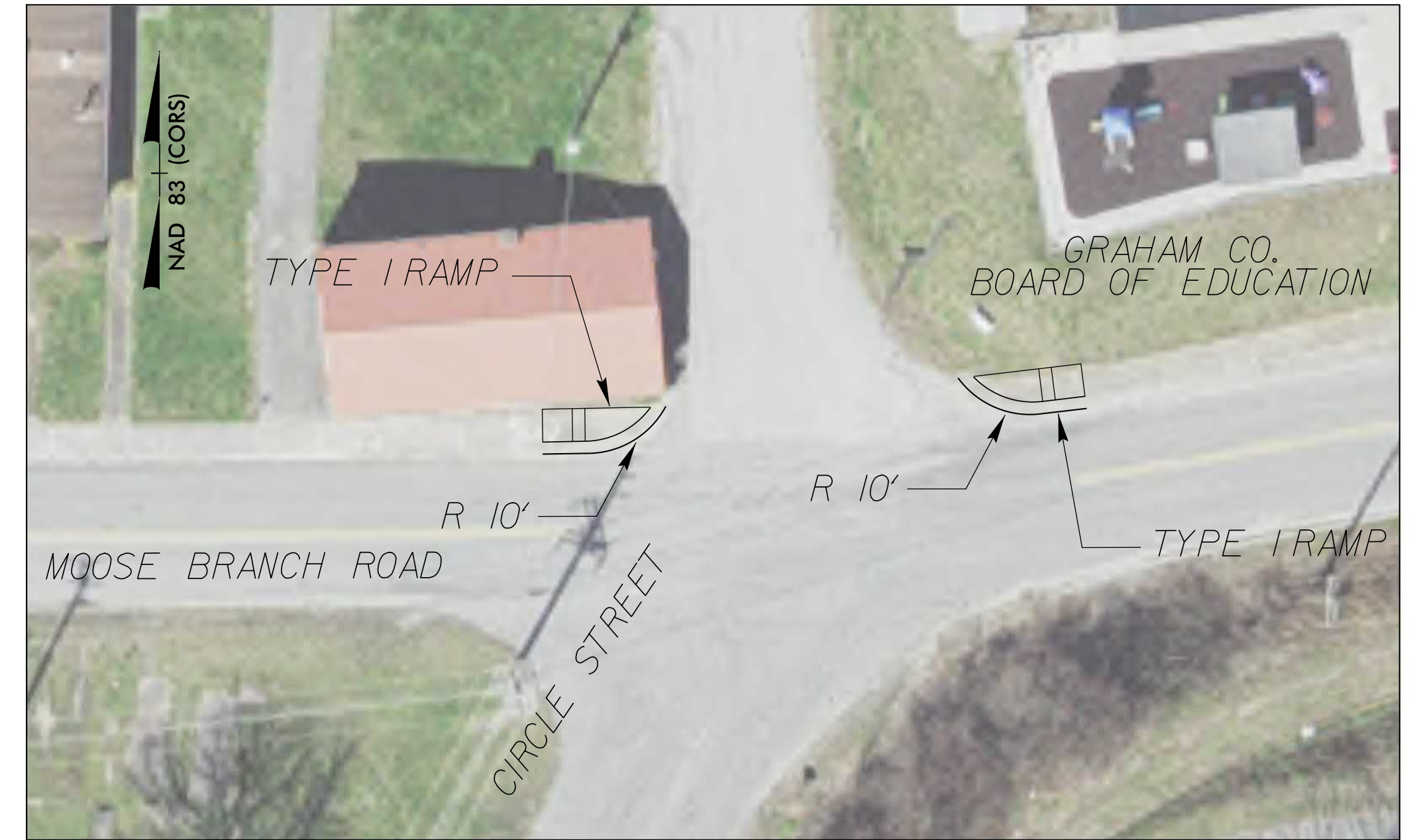
**DOCUMENT NOT CONSIDERED FINAL
UNLESS ALL SIGNATURES COMPLETED**



SITE 10 - SCHOOL GYM/TCCC AND MOOSE BRANCH ROAD



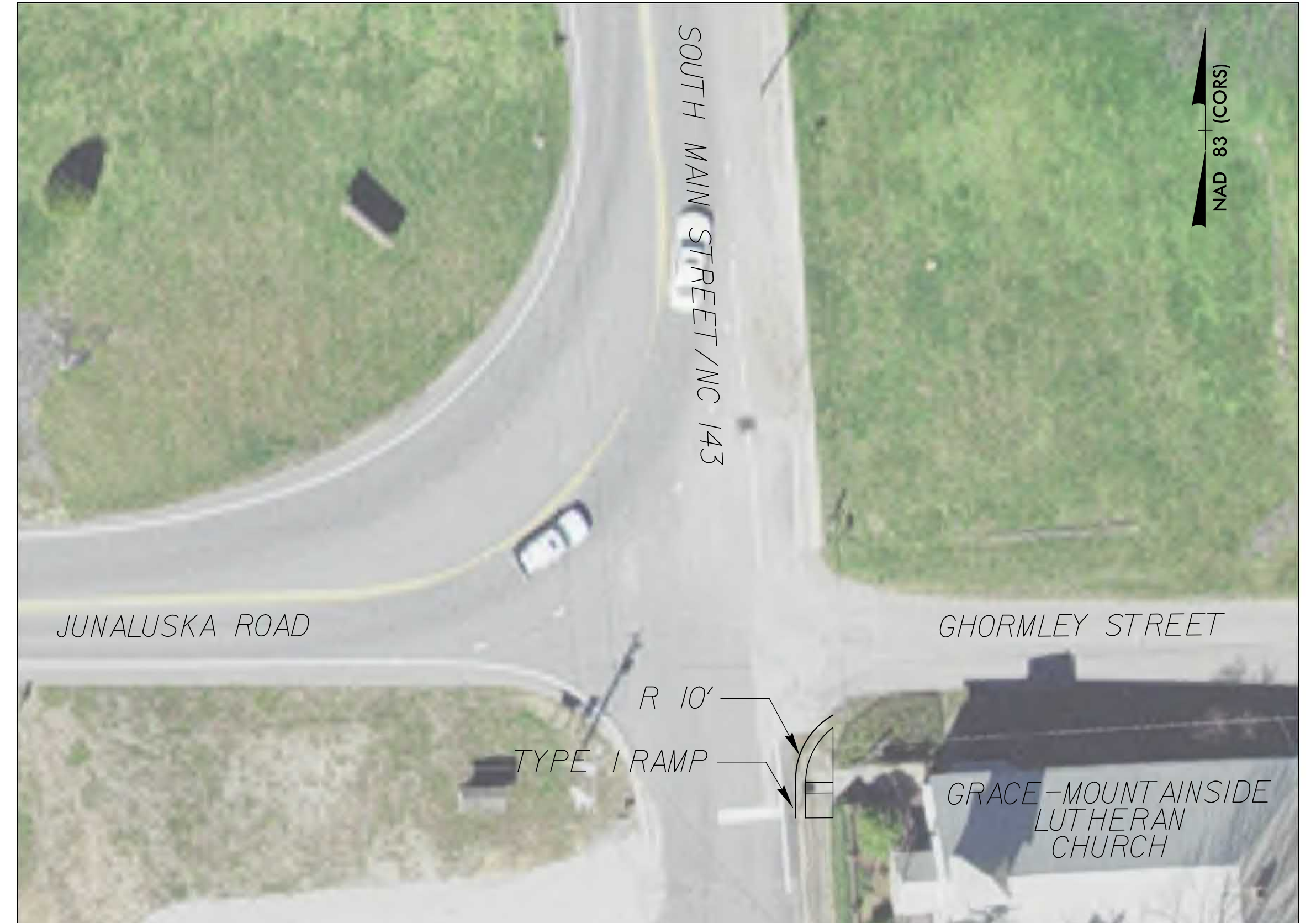
SITE 11 - MOOSE BRANCH ROAD AND GRAHAM COUNTY SCHOOL



SITE 12 - NORTH MAIN STREET AND DULA STREET



SITE 13 - GHORMLEY STREET AND SOUTH MAIN STREET/NC 143



SEE SHEETS 2C-1 & 2C-2 FOR CURB RAMP DETAILS

3/8/2022
T:\1883500-03\VR-5794A\Roadway\Pro\2019\2019 R-5794G District 3\GRAHAM_PSH7.dgn
cold

PLAN SHEETS FOR MACON COUNTY

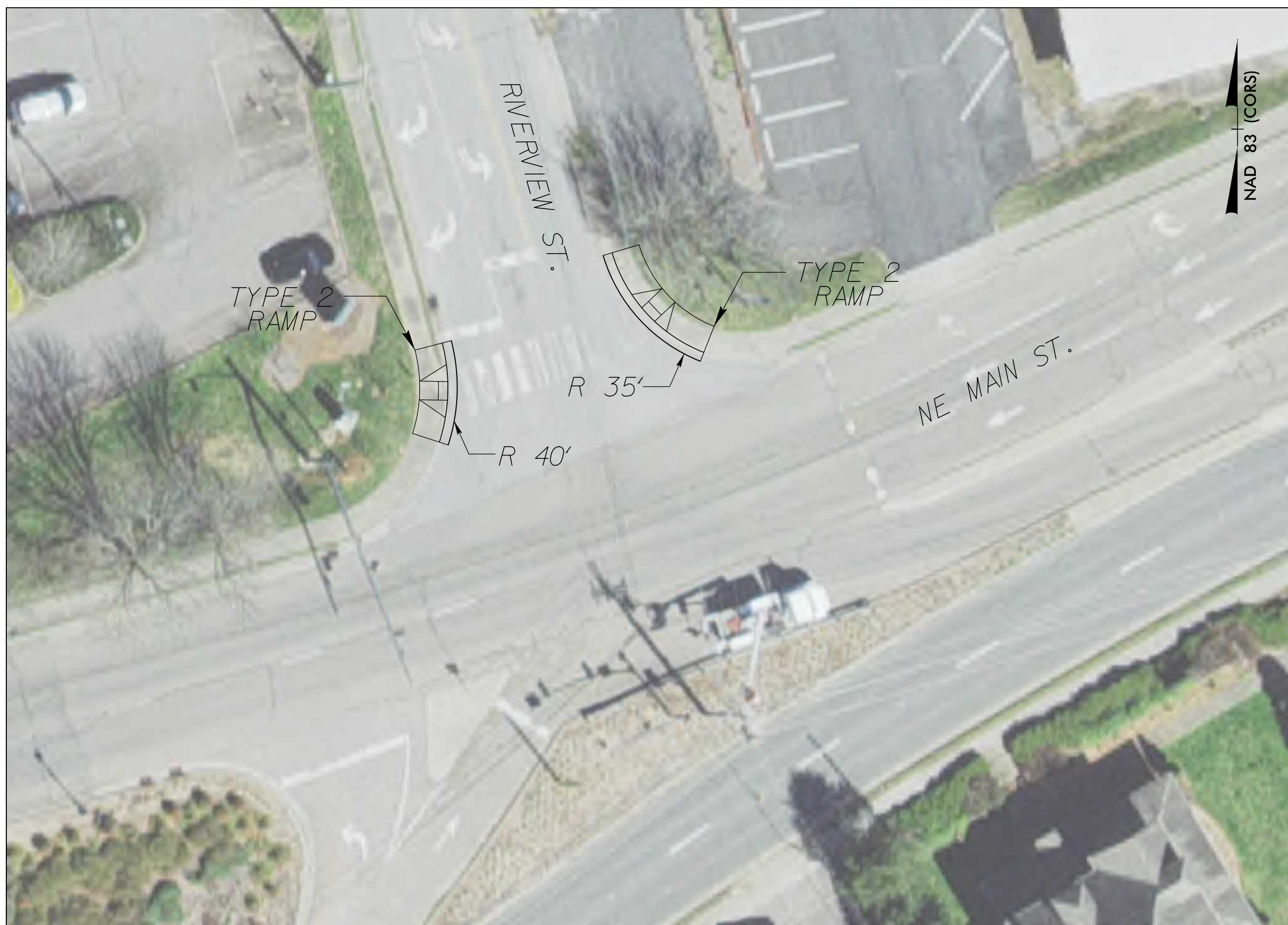
SITE 18 - RIDGEWOOD DRIVE AND IOTLA STREET



SITE 19 - EAST MAIN STREET AND NIKWASI LANE



SITE 20 - RIVERVIEW STREET AND NE MAIN STREET



SITE 21 - PINE LANE AND NE MAIN STREET

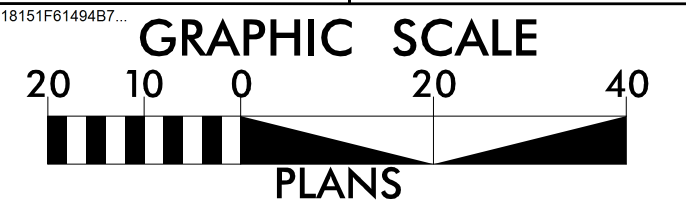


SEE SHEETS 2C-1 & 2C-2 FOR CURB RAMP DETAILS

wsp 1001 MOREHEAD SQUARE DRIVE
 SUITE 610
 CHARLOTTE, NC 28203
 NC LIC. NO. F-0165

**DOCUMENT NOT CONSIDERED FINAL
UNLESS ALL SIGNATURES COMPLETED**

PROJECT REFERENCE NO. R-5794G	SHEET NO. 10
RW SHEET NO.	
ROADWAY DESIGN ENGINEER	

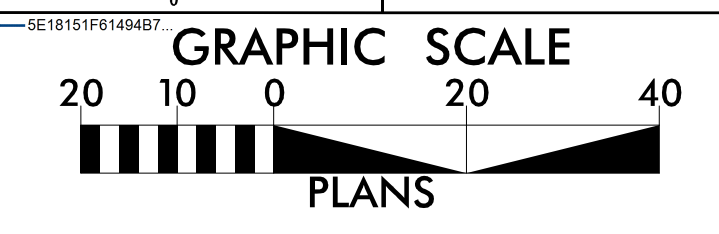


PLAN SHEETS FOR MACON COUNTY

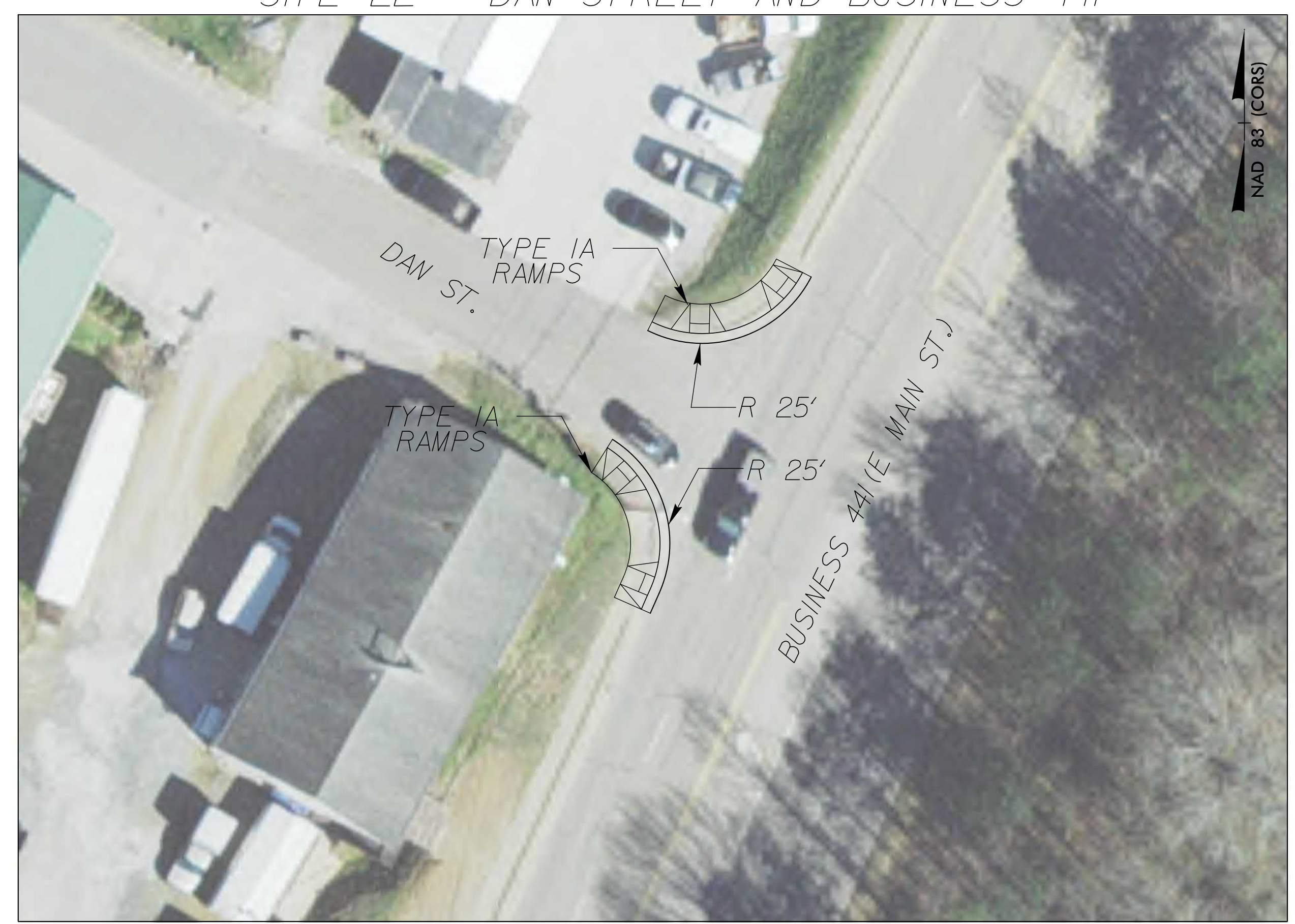
wsp 1001 MOREHEAD SQUARE DRIVE
SUITE 610
CHARLOTTE, NC 28203
NC LIC. NO. F-0165

**DOCUMENT NOT CONSIDERED FINAL
UNLESS ALL SIGNATURES COMPLETED**

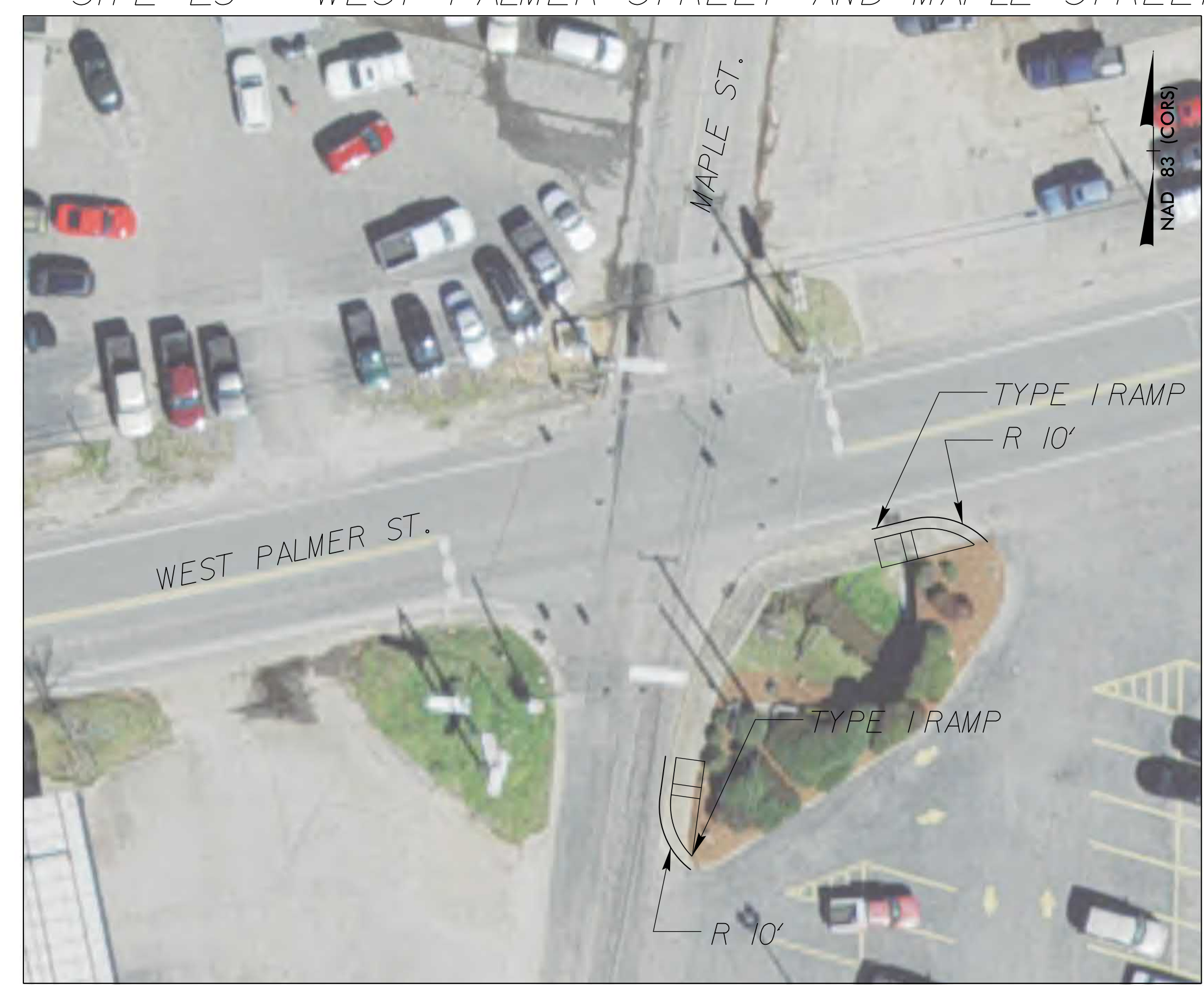
PROJECT REFERENCE NO. R-5794G	SHEET NO. 11
RW SHEET NO.	
ROADWAY DESIGN ENGINEER	



SITE 22 - DAN STREET AND BUSINESS 441



SITE 23 - WEST PALMER STREET AND MAPLE STREET



SITE 24 - CHURCH STREET AND HARRISON AVENUE



SITE 25 - PHILLIPS STREET AND WAYAH STREET



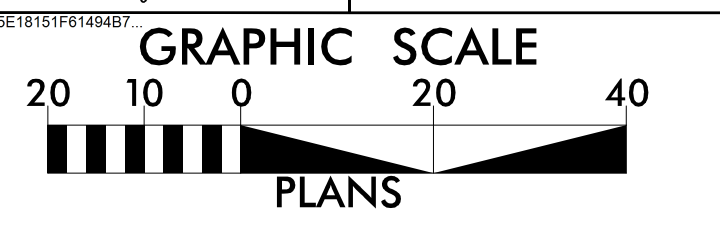
SEE SHEETS 2C-1 & 2C-2 FOR CURB RAMP DETAILS

PLAN SHEETS FOR MACON COUNTY

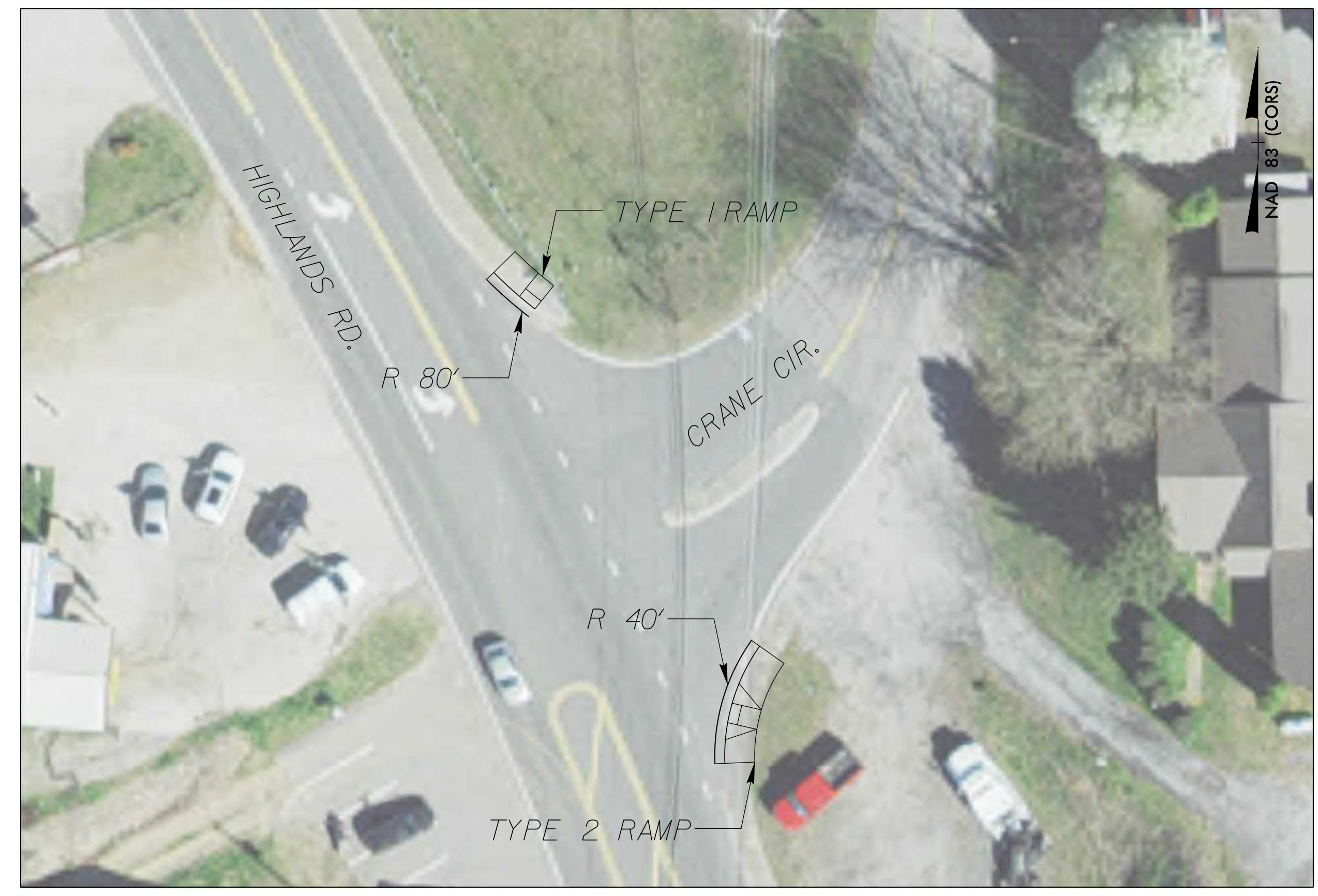
wsp 1001 MOREHEAD SQUARE DRIVE
SUITE 610
CHARLOTTE, NC 28203
NC LIC. NO. F-0165

**DOCUMENT NOT CONSIDERED FINAL
UNLESS ALL SIGNATURES COMPLETED**

PROJECT REFERENCE NO. R-5794G	SHEET NO. 12
RW SHEET NO.	
ROADWAY DESIGN ENGINEER	



SITE 26 - HIGHLANDS ROAD AND CRANE CIRCLE



SITE 27 - HIGHLANDS ROAD AND TENNESSEE VIEW STREET



SITE 28 - SPRING STREET AND HIGHWAY 106/DILLARD ROAD



SITE 29 - SOUTH 3RD STREET AND MAIN STREET



SEE SHEETS 2C-1 & 2C-2 FOR CURB RAMP DETAILS